

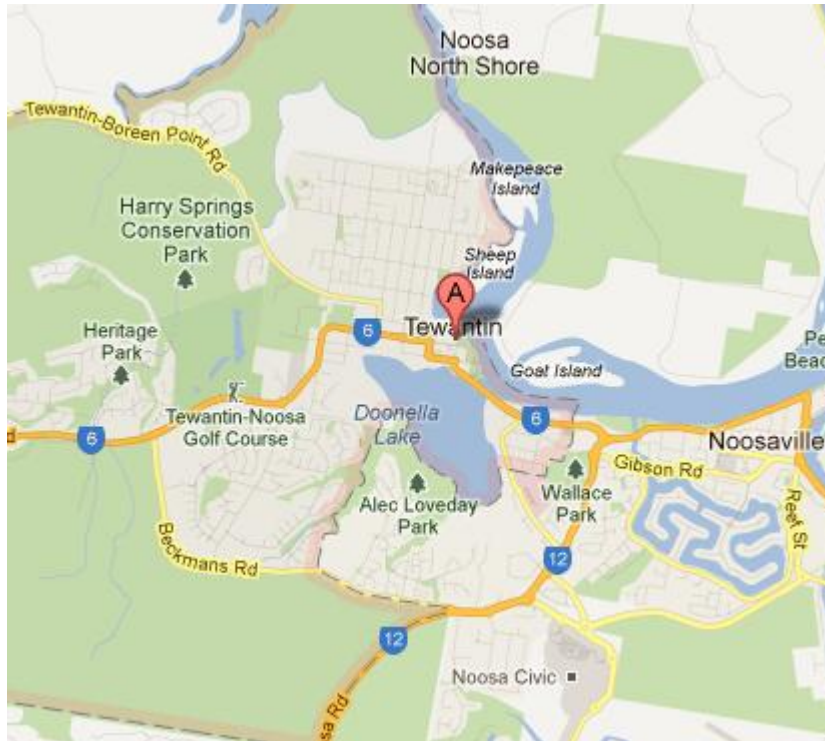
# TEWANTIN

16 February 2012

*Property intelligence for today and tomorrow*



## Sample market: Tewantin



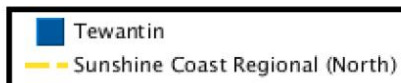
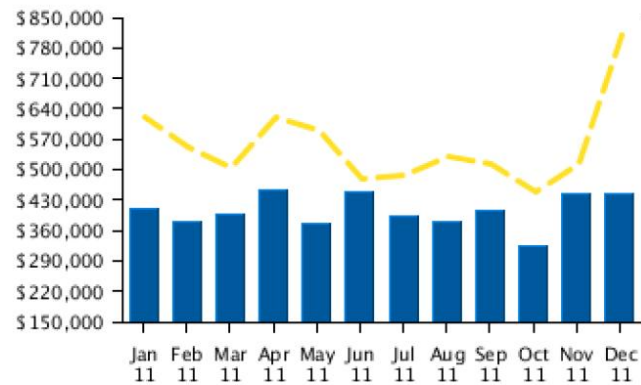
Noosa region population:  
50,000+ approx (2010)  
Tewantin population:  
13,000 approx (2010)

# Sample market: Tewanin

## Median Sale Price

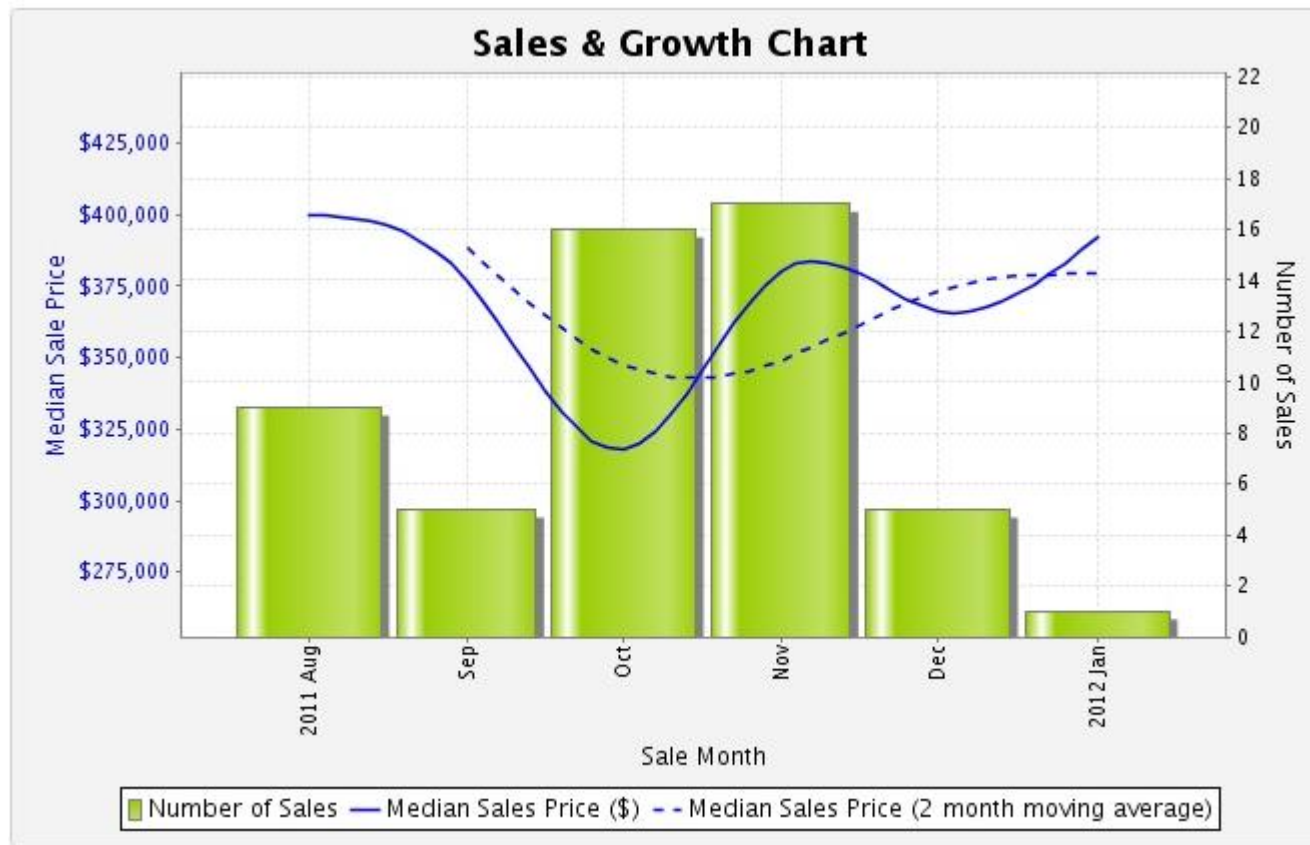
Period	Year 2010	Year 2011	Year 2012
	Median Price	Median Price	Median Price
January	\$459,500	\$410,000	\$442,500
February	\$450,000	\$380,000	\$0
March	\$470,000	\$395,000	\$0
April	\$447,000	\$452,500	\$0
May	\$455,000	\$375,750	\$0
June	\$447,900	\$450,000	\$0
July	\$469,500	\$393,750	\$0
August	\$520,000	\$380,000	\$0
September	\$519,500	\$403,500	\$0
October	\$380,000	\$324,300	\$0
November	\$472,750	\$442,500	\$0
December	\$449,500	\$442,500	\$0

## Recent Median House Sale Prices



Source: rpdata

# Tewantin market

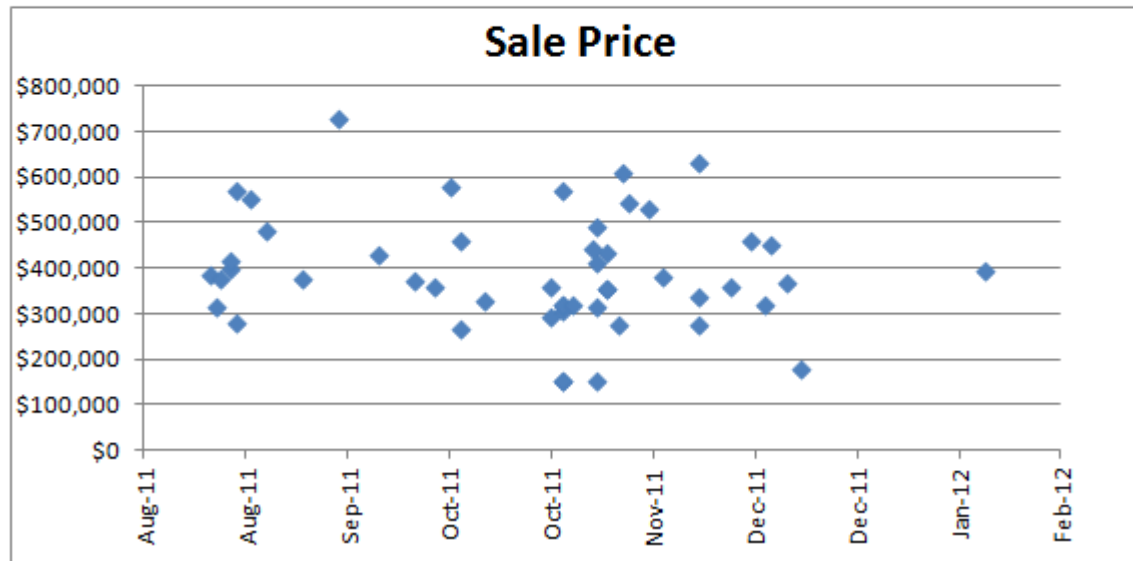


Note: Dec & Jan are sales recorded to date, only

Source: Pricerfinder

## Tewantin: sales last six months

	Number	Total Sales	Average
TEWANTIN	50	\$ 19,514,900	\$ 390,298



50 sales were recorded in the last six months, with main sales in the \$350k - \$600k range.

Source: Pricefinder

Note: Dec & Jan are sales recorded to date, only

## EXECUTIVE SUMMARY

*“Propell National Valuers offers the blend of experience and expertise as a national company in the scale of a boutique firm providing highly personalised service.”*

# EXECUTIVE SUMMARY

Propell is a well established, reputable Australia-wide valuation practice, specialising in the provision of residential valuations, commercial and business valuations and advisory services.

Our business has a proven track record and employs only quality valuers who have attained the required tertiary qualifications and maintain Australian Property Institute membership. We are old fashioned when it comes to quality and accuracy but embrace new technology, innovation and continuous improvement.



# EXECUTIVE SUMMARY

Propell maintains a point of difference in the market place through its focus on:

- Operational Excellence with plug and play operations;
- Open and effective communications with clients;
- Single entity structure enabling single point of contact and quick decision making;
- Operates under strict business planning guidelines to which it is committed and adheres to honesty, integrity, professionalism, confidentiality and above all quality control in the services provided;
- A long list of satisfied clients from a range of industries and professional disciplines with diverse valuation requirements;
- Focused on delivering structured and accurate valuation advice and has a deep appreciation for the importance of human capital in the valuation process;
- We are old fashioned but embrace technology, innovation and continuous improvement;
- Propell will always be about people - its clients and its own staff.

In summary, Propell National Valuers is an established valuation practice, specialising in the provision of valuation services on a national basis. The business has a proven track record and employs quality staff, has excellent procedural systems and maintains a point of difference with competitors through constant and sustained levels of communication.