

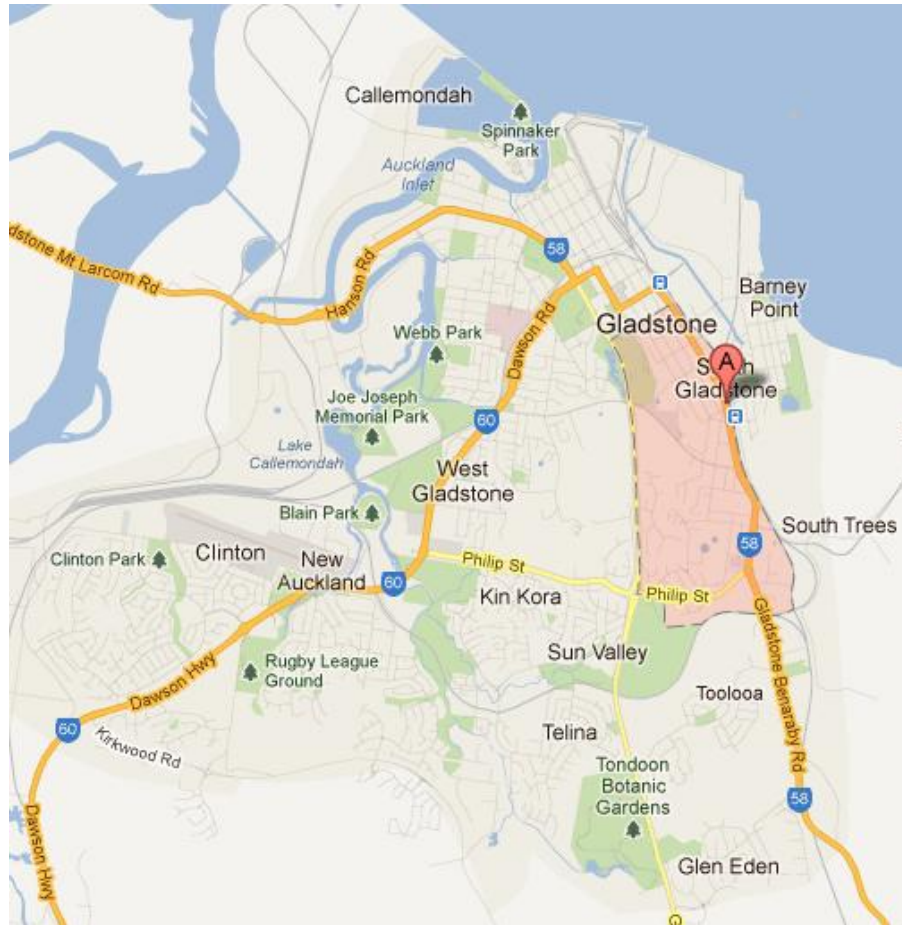
GLADSTONE

16 February 2012

Property intelligence for today and tomorrow



Sample market: South Gladstone



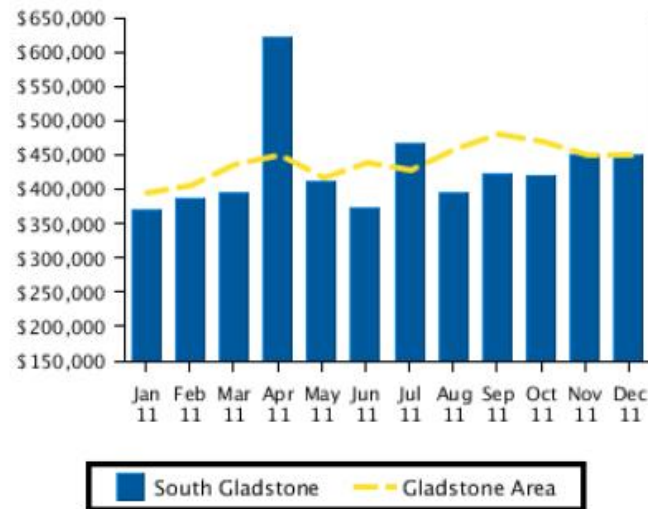
Gladstone population:
Metro 71,000 approx
Industries:
Alumina
Port
Agriculture

Sample market: South Gladstone

Recent Median House Sale Prices

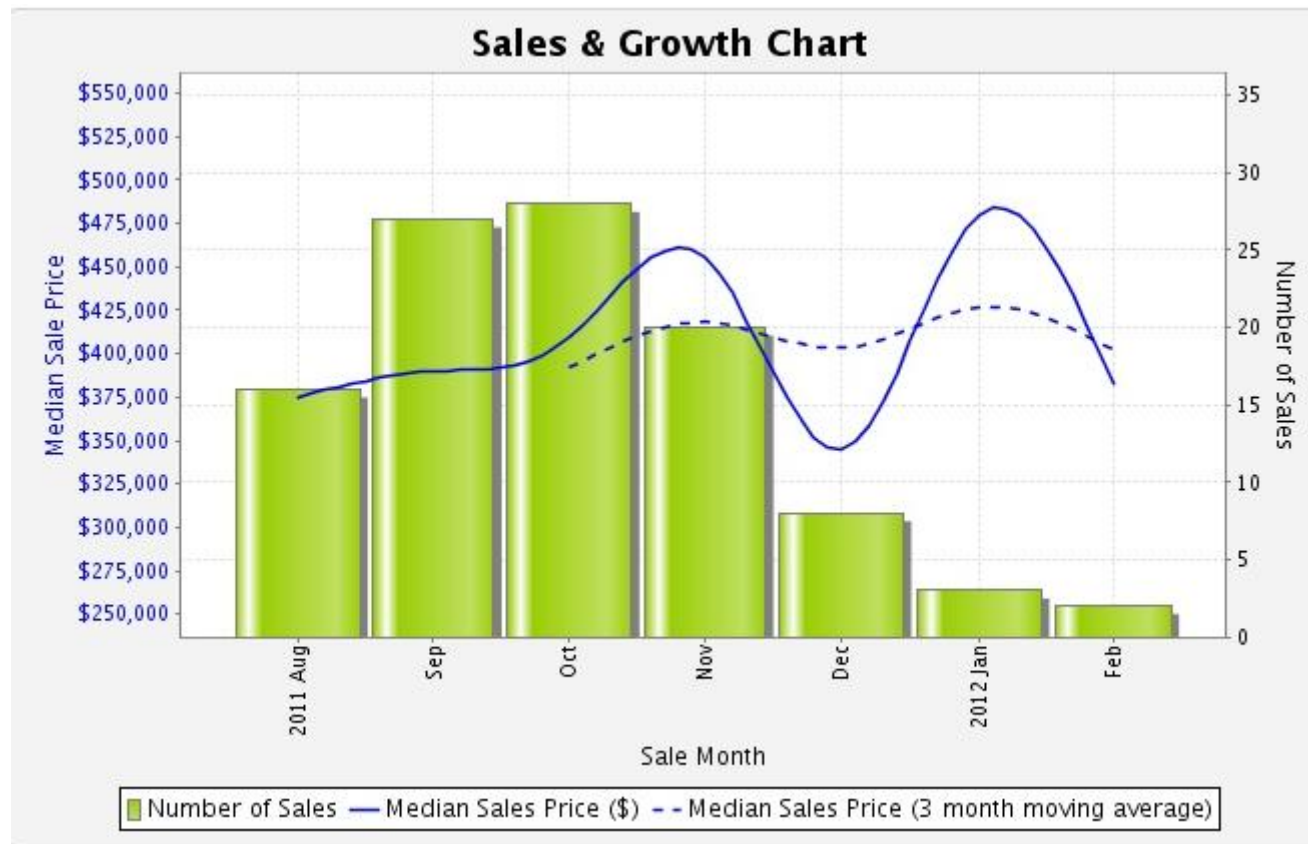
Period	South Gladstone Median Price	Gladstone Area Median Price
December 2011	\$449,000	\$449,000
November 2011	\$449,000	\$449,000
October 2011	\$419,000	\$469,000
September 2011	\$421,250	\$480,000
August 2011	\$395,000	\$459,000
July 2011	\$465,000	\$427,000
June 2011	\$372,000	\$440,000
May 2011	\$410,000	\$417,500
April 2011	\$620,000	\$450,000
March 2011	\$395,000	\$435,000
February 2011	\$387,500	\$406,500
January 2011	\$369,000	\$395,000

Recent Median House Sale Prices



Source: rpdata

Gladstone market (all)

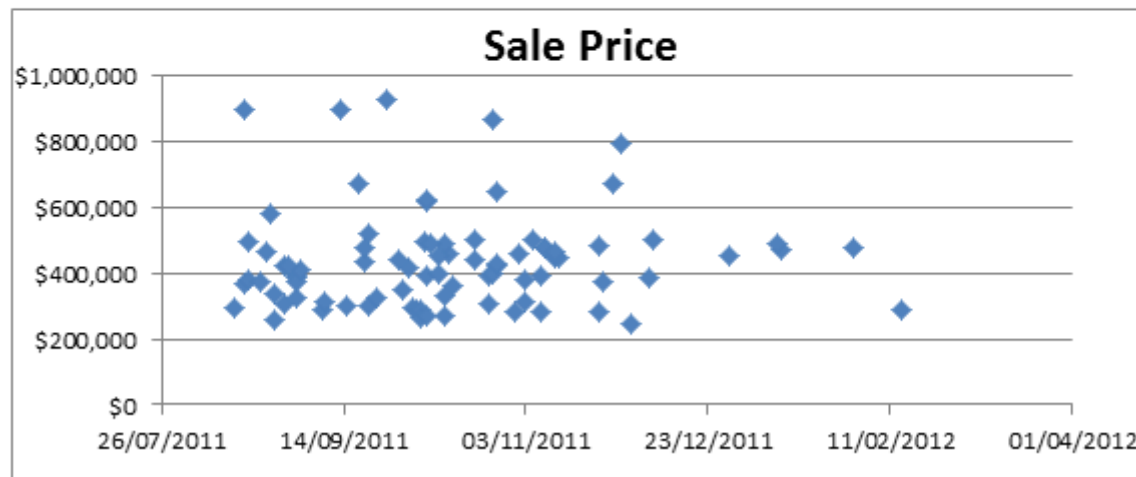


Note: Dec & Jan are sales recorded to date, only

Source: Pricerfinder

Gladstone market (all): sales last six months

	Number	Total Sales	Average
SOUTH GLADSTONE	52	\$ 20,968,500	\$ 403,240
GLADSTONE	11	\$ 4,717,500	\$ 428,864
GLADSTONE CITY	21	\$ 10,950,000	\$ 521,429



Of 84 sales recorded, 52 were in South Gladstone, with main sales in the \$250k - \$450k range.

Note: Dec & Jan are sales recorded to date, only

Source: Pricerfinder

EXECUTIVE SUMMARY

“Propell National Valuers offers the blend of experience and expertise as a national company in the scale of a boutique firm providing highly personalised service.”

EXECUTIVE SUMMARY

Propell is a well established, reputable Australia-wide valuation practice, specialising in the provision of residential valuations, commercial and business valuations and advisory services.

Our business has a proven track record and employs only quality valuers who have attained the required tertiary qualifications and maintain Australian Property Institute membership. We are old fashioned when it comes to quality and accuracy but embrace new technology, innovation and continuous improvement.



EXECUTIVE SUMMARY

Propell maintains a point of difference in the market place through its focus on:

- Operational Excellence with plug and play operations;
- Open and effective communications with clients;
- Single entity structure enabling single point of contact and quick decision making;
- Operates under strict business planning guidelines to which it is committed and adheres to honesty, integrity, professionalism, confidentiality and above all quality control in the services provided;
- A long list of satisfied clients from a range of industries and professional disciplines with diverse valuation requirements;
- Focused on delivering structured and accurate valuation advice and has a deep appreciation for the importance of human capital in the valuation process;
- We are old fashioned but embrace technology, innovation and continuous improvement;
- Propell will always be about people - its clients and its own staff.

In summary, Propell National Valuers is an established valuation practice, specialising in the provision of valuation services on a national basis. The business has a proven track record and employs quality staff, has excellent procedural systems and maintains a point of difference with competitors through constant and sustained levels of communication.